

# STELLAR Cabinet

---



JAKE PHIPPS

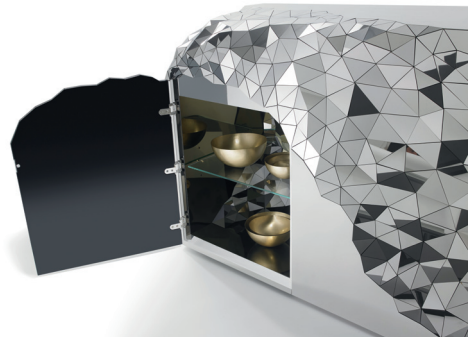
[WWW.JAKEPHIPPS.COM](http://WWW.JAKEPHIPPS.COM)



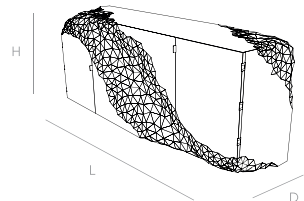
Part of the award winning Stellar Collection - the Stellar Cabinet is inspired by the precious qualities of naturally forming amethyst geodes and machine cut diamonds. The large expansive surfaces on the cabinet are in stark contrast to the turbulent seam of individually sized and angled mirrored sections that run through them.

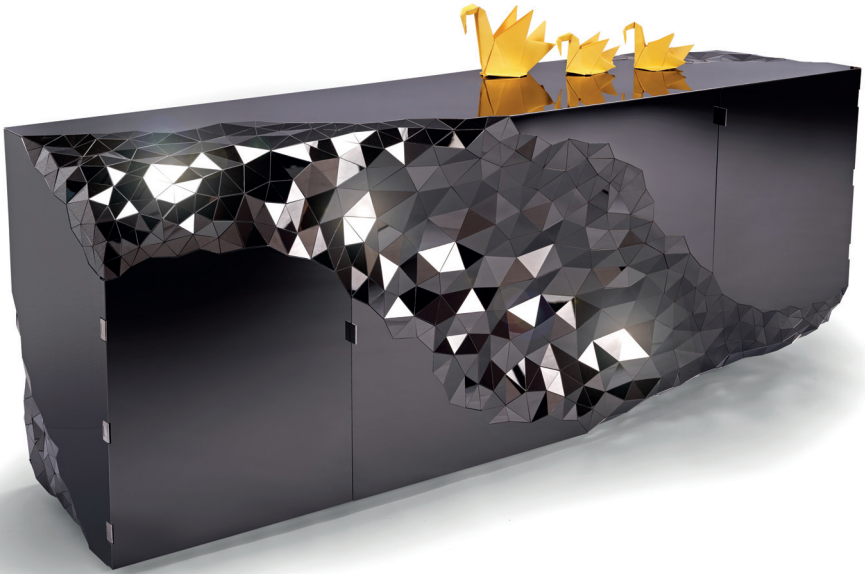
This change in surface creates an optical dispersion that breaks down the light and the surrounding environment, delivering each piece to the eye as one sparkling entity.

The cabinet consists of two internal storage areas each with a polished brass lining, internal Stellar detailing, and a height adjustable glass shelf.

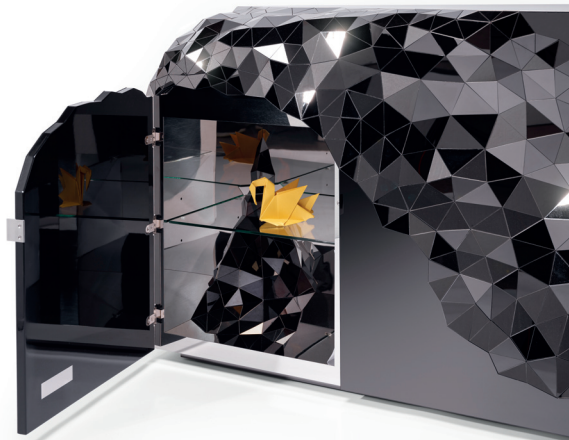
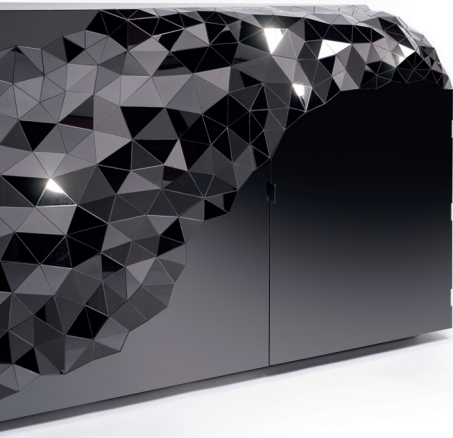


NAME	STELLAR Cabinet
WEIGHT	80 kg
DIMENSIONS	L200cm x D50cm x H80cm
MATERIAL	Super Mirror Polished Steel and Brass
AVAILABILITY	Bespoke sizes available
LEAD TIME	12 - 14 weeks





This STELLAR Cabinet is also available in a sleek Onyx Black finish. This gives the piece a more subdued luminescence during the day, coming alive in darker conditions with focused lighting.



NAME	STELLAR Cabinet - Onyx Black
WEIGHT	80 kg
DIMENSIONS	L200cm x D50cm x H80cm
MATERIAL	Onyx Black Polished Steel and mirror
AVAILABILITY	Bespoke sizes available
LEAD TIME	12 - 14 weeks

